


Dell Micro-USB Dongle

For Data and Charging

User's Manual



 **NOTE:** A NOTE indicates important information that helps you make better use of your computer.

 **CAUTION:** A CAUTION indicates potential damage to hardware or loss of data if instructions are not followed.

Copyright © 2014 Dell Inc. All rights reserved. This product is protected by U.S. and international copyright and intellectual property laws. Dell™ and the Dell logo are trademarks of Dell Inc. in the United States and/or other jurisdictions. All other marks and names mentioned herein may be trademarks of their respective companies.

Introduction

The Dell Micro-USB dongle allows you to connect USB devices such as USB drives, external hard-drives, keyboards, mice, and so on, to your tablet. It also allows you to charge your tablet while USB devices are connected.

You can simultaneously connect multiple USB devices to the tablet using a USB hub. Depending upon the type and number of USB devices, you may need a powered USB hub.

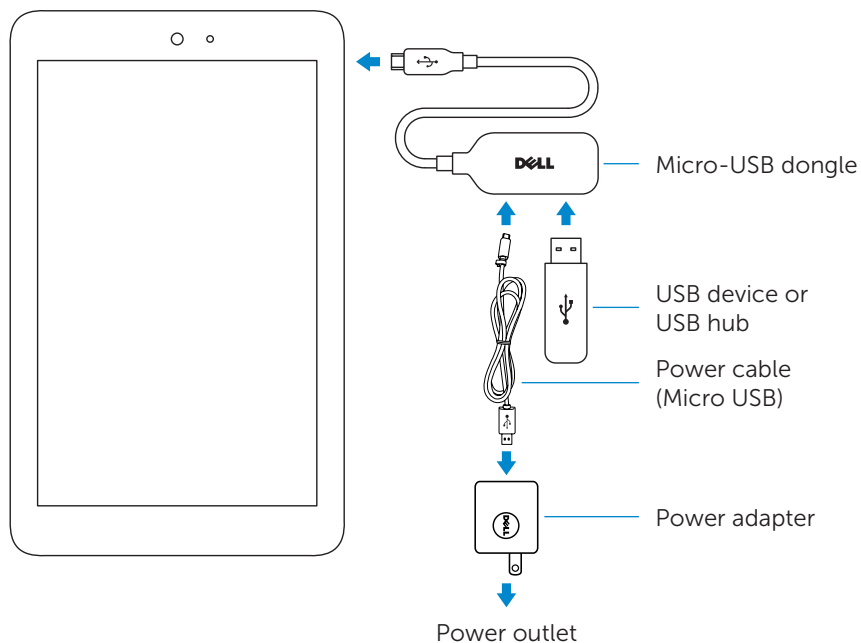
NOTE: The dongle is USB 2.0-compliant.

Connecting the Dongle

NOTE: Power cable and adapter are not shipped with the dongle. Use the power cable and adapter that shipped with your tablet.


CAUTION: Use only the power adapter designed for your tablet. Using unauthorized power adapters or cables may severely damage your tablet.

1. Connect the dongle to the micro-USB port of your tablet.
2. Connect the power adapter to the dongle.
3. Connect a standard USB device or a USB hub to the dongle.



Troubleshooting

Problems	Possible causes	Possible solutions
USB devices momentarily stop working when you connect or disconnect the power adapter to the dongle.		This is an expected behavior and the device resumes functioning automatically.
USB hard drive is not getting detected.	Power adapter is not connected to the dongle.	Connect the tablet's USB power adapter to the Dell Micro-USB dongle.
	USB cable used to connect the hard drive is too long or non-standard.	Use a shorter USB cable to connect the hard drive to the dongle or use a higher quality cable.
	The drive you are attempting to use is drawing more power than is available via the dongle.	Use a powered USB hub.

 **CAUTION:** To avoid data loss, unmount or eject USB storage devices before disconnecting them from the dongle.